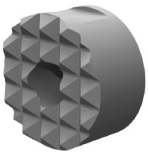


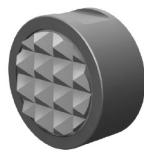
Replaceable Pads

SERRATED GRIPPER PADS



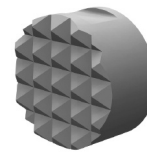
High Speed Tool Steel

Manufactured from M-2 high speed tool steel, hardened to Rc 60/62 with black oxide finish. Mounts with tapped hole, counter bored hole or a flat on the outside diameter for set screw mounting.



Carbide Tipped

Constructed with a high impact carbide pad brazed to a heat treated alloy steel body. Mounts with tapped hole or a flat on the outside diameter for set screw mounting.



Solid Carbide

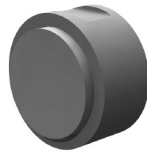
Manufactured from high impact carbide in a solid serrated gripper pad with a threaded brazed-in steel insert. Mounts with tapped hole or a flat on the outside diameter for set screw mounting.

FLAT REST PADS



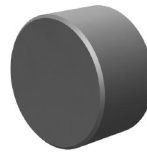
Solid Carbide

High impact carbide pads. Can be brazed or bonded into place.



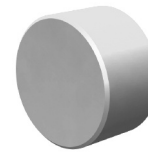
Carbide Tipped

Constructed with a high impact carbide pad brazed to a heat treated alloy steel body. Mounts with tapped hole or a flat on the outside diameter for set screw mounting.



Hardened Steel

Made from 8620 steel, carburized and hardened to Rc 58/60 .050" case with black oxide finish. Mounts with tapped or counter bored hole.



Non-Marring Delrin

Manufactured from white Delrin. Mounts with counter bored or tapped hole.

Tooth Pattern Specifications

Throughout this catalog, you will find reference to tooth patterns on all serrated grippers. Please use the chart below for specific information regarding these tooth patterns. If additional information is required, please contact us.

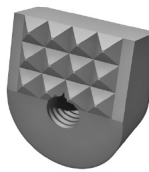
ANGLE GRIPPERS



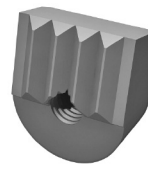
Smooth



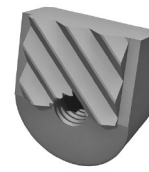
4 Point



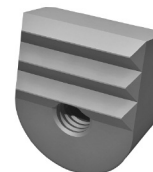
Fine



Straight

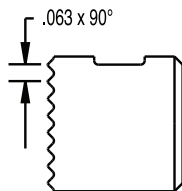


Angular
Straight

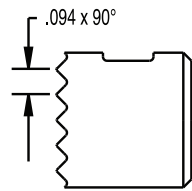


3 Point /
90° Straight

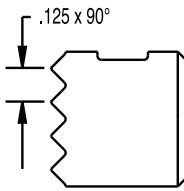
ROUND AND SQUARE GRIPPERS



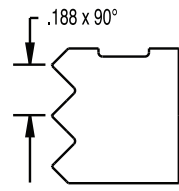
Super Fine
"SF"



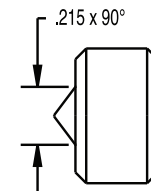
Extra Fine
"EF"



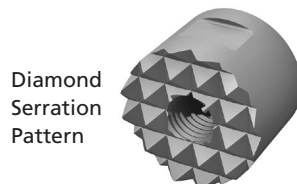
Fine



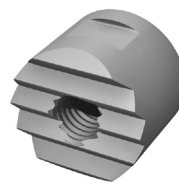
Coarse



Single Point



Diamond
Serration
Pattern

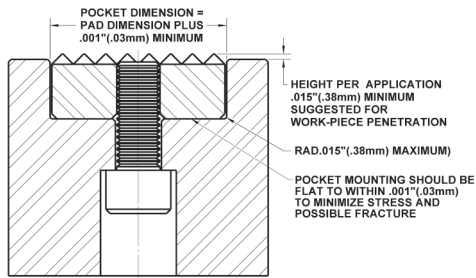


Straight
Serration
Pattern
"SS"

Serrated Gripper Pad, Rest Pad And Carbide Pad Mounting Applications and Specifications

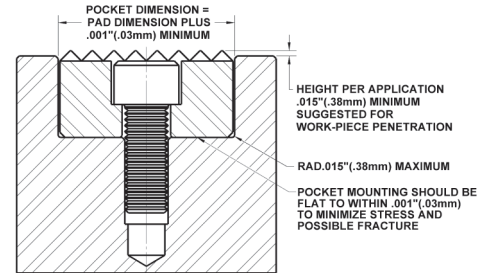
Below are some of the more common mounting applications for fixed grippers, rest pads and carbide pads shown in this catalog.

Round or square grippers and rest pads with tapped blind-hole or through hole tap.



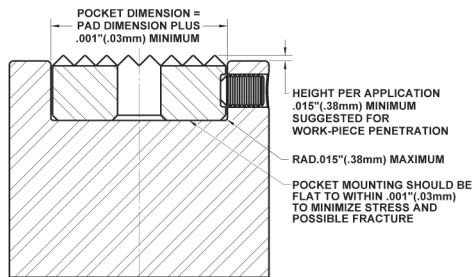
BOLT THROUGH FROM BACK USING A SOCKET HEAD CAP SCREW. CAN ONLY BE USED WITH THREADED STYLE PADS. (SERRATED GRIPPER SHOWN)

Round or square grippers and rest pads with counter-bored hole.



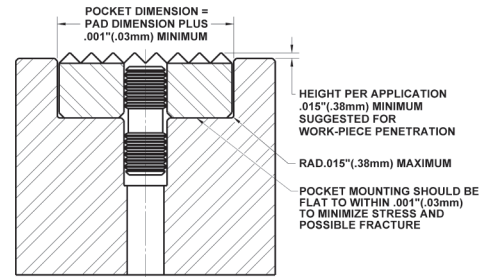
BOLT THROUGH FROM FRONT USING A SOCKET HEAD CAP SCREW. CAN ONLY BE USED WITH C'BORED STYLE PADS. (SERRATED GRIPPER SHOWN)

Round grippers with flat on the O.D. for set screw mounting, or square gripper.



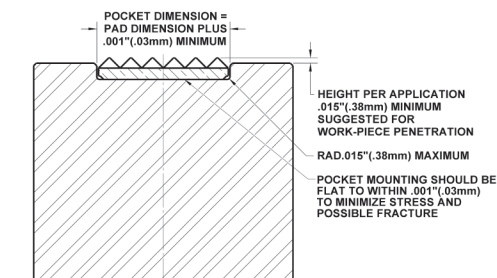
SET SCREW FROM SIDE TO FLAT ON ROUND GRIPPER OR SIDE OF SQUARE GRIPPER.

Round or square grippers with through tapped hole.



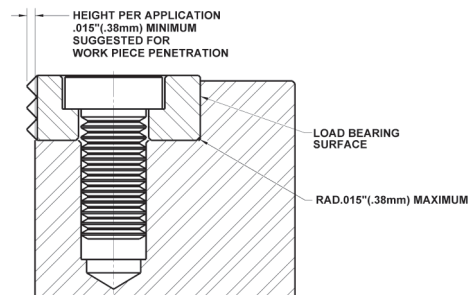
DIFFERENTIAL SCREW FROM FRONT OR BACK UTILIZING L.H. TAPPED HOLE IN POCKET. CAN ONLY BE USED WITH TAPPED STYLE PADS. (SERRATED GRIPPER SHOWN)

Round or square carbide pads.



A CARBIDE PAD CAN BE FASTENED USING SILVER SOLDER (PREFERRED) OR A FLEXIBLE ADHESIVE. CAN ONLY BE USED WITH CARBIDE STYLE PADS. (SERRATED GRIPPER SHOWN)

Counter-bored edge grippers.



BOLT THROUGH FROM TOP USING A LOW HEAD SOCKET CAP SCREW. CAN ONLY BE USED WITH EDGE STYLE SERRATED GRIPPER PADS.